

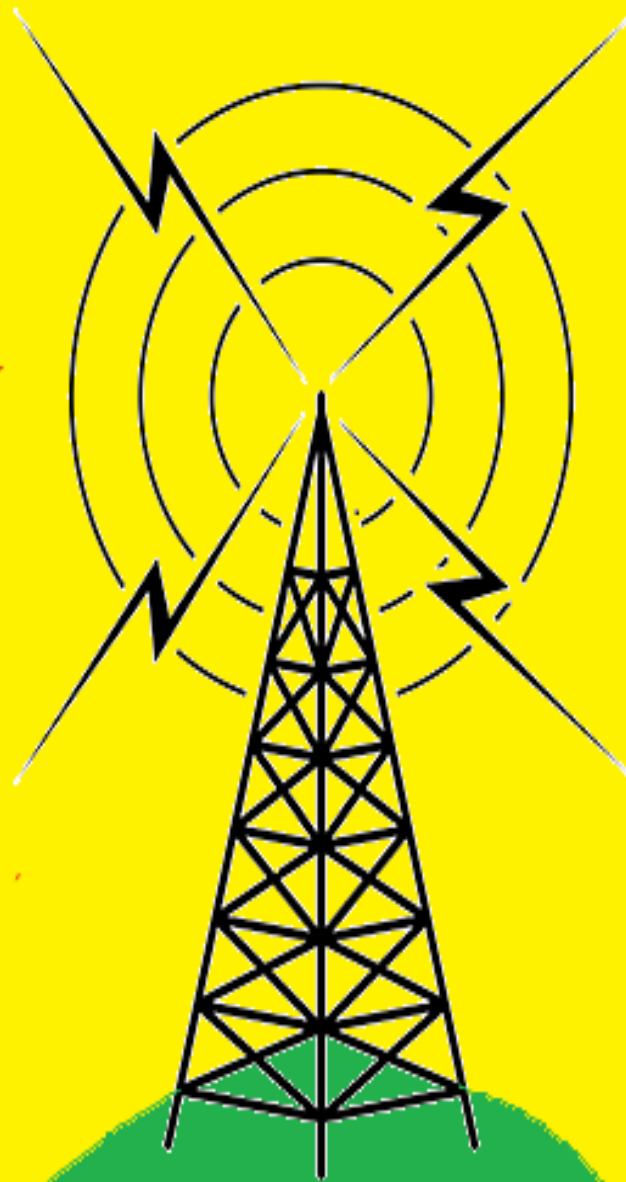
WMUU

WIDE

WVMO

WWMV

WLSP



**Low Power
Community Radio
of Greater Madison**

February 2017

Welcome!

I'm excited to bring you the first edition of the Low Power Community Radio of Greater Madison newsletter. The purpose of this newsletter is to share news and information from five community-based low power radio stations in the greater Madison area: WIDE 99.1 FM and WWMV 95.5 FM on the west side, WMUU 102.9 FM in downtown Madison, WVMO 98.7 FM in Monona, and WLSP 103.5 FM in Sun Prairie.

Though our stations each have different programming, outreach methods, and organizational structures, we are united in our mission to create more opportunities for residents of the greater Madison area to share music, report news, and build community through media. Even with the rise of podcasts, social media, and on-demand listening services, radio stations continue to serve their communities by providing spaces for media production, education in journalism, engineering, and non-profit operation, and perhaps most importantly, a place for people to work together and support each other. We need community-powered and supported media now more than ever, and we need spaces for people to teach, work, and explore new ways to share their stories as well as lift up the voices of others.

These five radio stations are all achieving that goal in different ways, and all of it is exciting. Some stations have been on the air for over eight years, some have been on for two, and some have been on for just a month, but they have all done amazing work, and I am excited to share their stories with you. I hope you will stay tuned, learn more about these stations, and get involved. We want to hear from you!

Yours in community broadcasting,

Elizabeth Delaquess

WMUU 102.9 FM



WWMV 95.5 FM

Many Voices, One Community



WWMV-LP 95.5FM: Starting the New Year on the Airwaves

“Everybody has a culture,” says Station Manager Richard Jones Jr. “Everybody has experiences and music and hardships and stories nobody else would believe if they told them to people. That’s why WWMV-LP exists as a radio station. People need to be able to express themselves and live in some of those moments together”.

WWMV-LP 95.5 FM, Many Voices, One Community is a low power FM radio station broadcasting from the Lussier Community Education Center on the west side of Madison. The west side of Madison is filled with many different types of people. While focusing on access and diversity, the station (and the LCEC more generally) are building community by sharing gifts, talents, perspectives, and cultures of community members while creating opportunities for people of all ages and walks of life to develop their own voice and learn new skills.

From dedicated adults to the students in Youth On Air Initiative, people are creating content based on their experiences. For example:

- Our longest running show, ***The Spinout***, by community member Mari Hansen, plays top 40 music throughout the ages.
- Memorial High School students are creating a show in our afterschool program while other students in a Memorial media production course are learning how to edit them.

- Cliff Wilford, an LCEC staff member, hosts “Listen Here” a jazz and blues show inspired by the music he listened to while he was growing up.
- Community members like Sean O’Donnell and Eric Howland come in weekly to help with the technical aspects of the station.

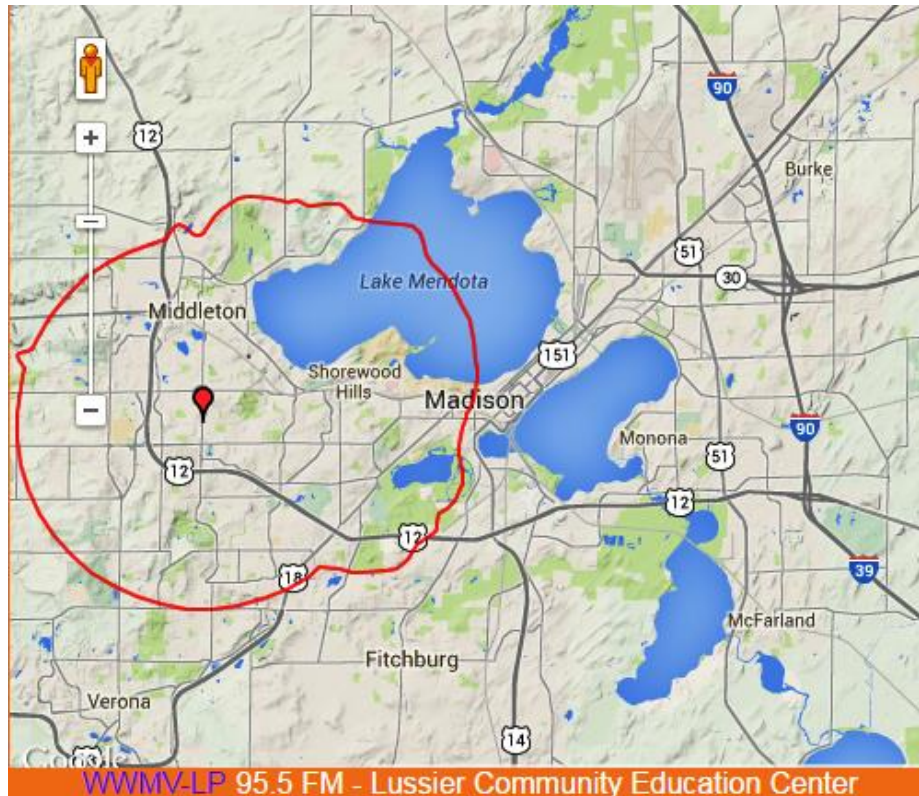
UW-Madison and Edgewood College interns, volunteers with broadcast and technical expertise and many others help make all of this possible.

“We want people to share parts of themselves with the community,” Jones adds. “Radio gives a chance to appreciate cultures other than our own. It gives a chance to celebrate and empathize with one another. Community is already happening, and it’s our job to highlight it and share it.”

There are still many opportunities to get involved with WWMV-LP FM 95.5. If you are interested in creating a show, or you are someone with production experience willing to help others make their radio dreams come true, there is a place for you!



Tune into our station at 95.5 FM to hear our programs or check out our pre-recorded shows on SoundCloud.com at <https://soundcloud.com/wwmv-lp-95-5fm>. To learn more about our station check out our website at www.wwmvlp.org or our Facebook at <https://www.facebook.com/WWMVLP955/>.



WIDE 99.1 FM

Progressive Voices on the Air

“A wellspring of progressive ideas...” that's how one of the new 2017 station IDs for WIDE-LP starts. Broadcasting on Madison's west side since 2008, we have always included talk shows with progressive ideas in our programming, but with the new year we are trying to bring that into focus. Prompted in part by the post-election demise of "progressive talk" on one of Madison's commercial radio stations, we have changed the slogan on our website at widelp.org to “Progressive Voices on the Air.”

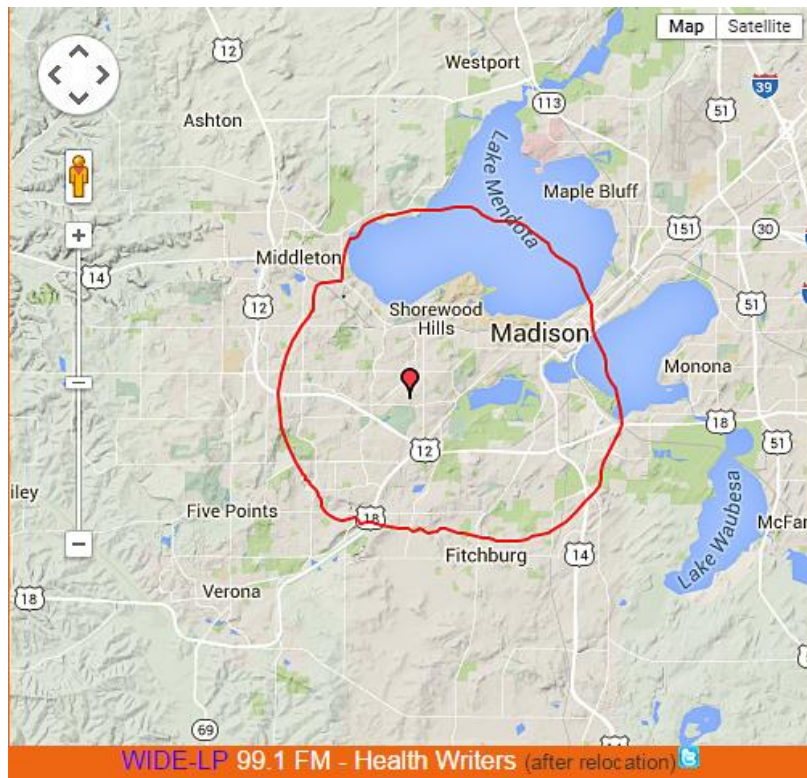
Music is what you will hear most of the time at 99.1 FM, but the talk starts at 9 am each day. Monday through Friday 9 am is when you will hear [Democracy Now!](#) and at 9 am on Saturday you'll hear [CounterSpin](#). On Saturdays and Sundays you will also hear *Progressive Voices*, our spot for talks given annually at Fighting Bob Fest, Wisconsin Democracy Report, and the Freethinkers Hour. New this year are podcasts from Conatus News, heard Sundays at 6 pm, and *Bill Moyers in Conversation*, heard Mondays at 6 pm. *Books & Writers* at 4 pm Wednesdays often features interviews of authors with progressive ideas, and *Battleground Wisconsin* at 4 pm on Fridays lets you hear observations on what's happening politically here in our state from Citizen Action of Wisconsin. For our full weekly schedule at a glance see <http://madisonwi.us/WIDE-LP/schedule/>, and for notification of talk show topics coming up the following day follow us on Twitter at https://twitter.com/WIDE_LP.

The color coding in our weekly schedule chart shows the variety in the music we air. Largely staying away from the pop/rock, country and classical offerings regularly found on other area stations, we offer an alternative mix, a daily 9 to 10 pm genre hour, and weekend times for music rarely heard in the Madison area including zydeco, Hawaiian, doo wop and uncommon instruments. Listener appreciation shows up in email to the station at radio@widelp.org. One listener pulled off the road on his way to Janesville for 20 min. so that he could hear the rest of our Saturday a cappella hour before getting out of range.

"How big an operation is your station?" you may ask. We are about as small as it gets. We have no paid staff, no studio, and no live broadcasting. Everything is controlled by a computer housed in an unheated garage on Orchard Drive in the Midvale Heights neighborhood. We program that broadcast computer through the Internet. Our chief expenses are the annual royalty fees for the music we air and payments for the electricity we use and part of the cost of the shared Internet connection. The station has a 4 member board but day-to-day operation is handled by two of us as Program Director and Technical Director. There is also a contribution from the local neighborhood, a weekly Crime Alert segment recorded by the head of Midvale Heights Neighborhood Watch.

The history of our station is unique because we started as a partnership with a Christian group, and each partner had half the air time and paid half the expenses. This partnership ended in 2015 when the Christian group got their own station. Shortly after that we moved the station to its current, more central location where we were able to give our broadcast antenna more height. In fact, because of the antenna's height above average terrain in the new location, the FCC required us to reduce our power from 100 to 40 watts. Nevertheless we feel the new location enables us to reach more listeners with less intrusion from a full power Milwaukee station that broadcasts at the same frequency, 99.1 FM. More details about our history are available on our website at <http://madisonwi.us/WIDE-LP/history.htm>.

Like so many radio stations in Wisconsin and elsewhere, we owe a debt of gratitude to Norman Stockwell for helping us get on the air. The photo below from 2008 shows Norm at our first post-testing broadcast location with Laura Gutknecht and Molly Stentz from WORT, and Eric Howland, our Technical Director. Molly is recording comments from Eric as we prepare to go on the air for our first regularly scheduled broadcast.



WMUU 102.9 FM

Radio that Moves You

What is WMUU?

WMUU 102.9 FM is a low power radio station broadcasting from downtown Madison, Wisconsin. Our automated content includes primarily half-hour and hour-long interviews on a wide range of topics including news, history, science, religion, philosophy, arts, culture, and more. We air nationally syndicated programs such as *Sprouts* from Pacifica Radio, *The Mimi Geerges Show*, and *Alternative Radio*, as well as locally produced programs, such as *The Local Muus*, *The Politicast*, and *Freethought Radio*. We also do a live broadcast of the worship services at the First Unitarian Society every Sunday morning.

As well as our talk programs, we have a live broadcast show from The Fountain restaurant at 122 State Street in Madison. These *Live from the Fountain* broadcasts feature local folk, rock, and jazz artists, and are free and open to the public. *Live from the Fountain* airs most Thursdays and Fridays from 8-10 pm. We also broadcast a nationally syndicated music show, *West Coast Live*, classical music from the Noon Musicale at First Unitarian Society, and a two-hour world music show, *Exiles Return*, produced by First Unitarian Society Audio Specialist Elizabeth Delaquess.

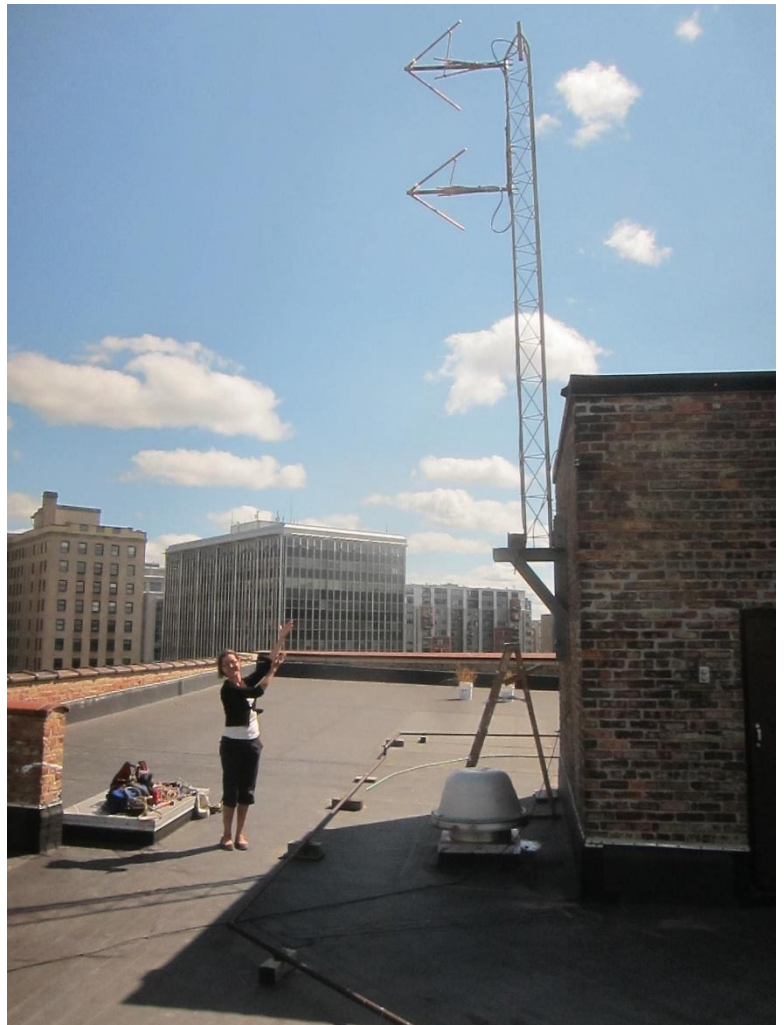
Who Owns WMUU?

WMUU is owned by the First Unitarian Society (FUS) of Madison, a Unitarian Universalist congregation with over 1500 members. FUS is a progressive religious institution that seeks to be a place where people can explore spiritual, ethical, and social issues in a welcoming environment. In following this mission, WMUU seeks to provide programming that challenges, inspires, entertains, and enlightens listeners.

FUS also has a long history of working for social justice in Madison, and many of its members are involved in projects centered on racial justice, economic equality, LGBTQ and women's rights, and environmental stewardship. WMUU airs a number of social justice talks and interviews from FUS, and is committed to sharing the work of social justice activists with the Madison community.

WMUU History

In October 2013, FUS applied for a low-power radio license, with some generous assistance from Brown Broadcasting in Portland Oregon, and Kelly Warren and Dan Cornwell from the non-profit Madison Institute in Madison, WI. After receiving our construction permit from the Federal Communications Commission (FCC) in February 2014, we secured broadcasting space at Central Properties on State Street in downtown Madison. After a year of planning and preparation,



we went on the air for a few hours on August 19th, 2015, and unveiled our first full day of regular programming on August 20th (which happens to be National Radio Day).

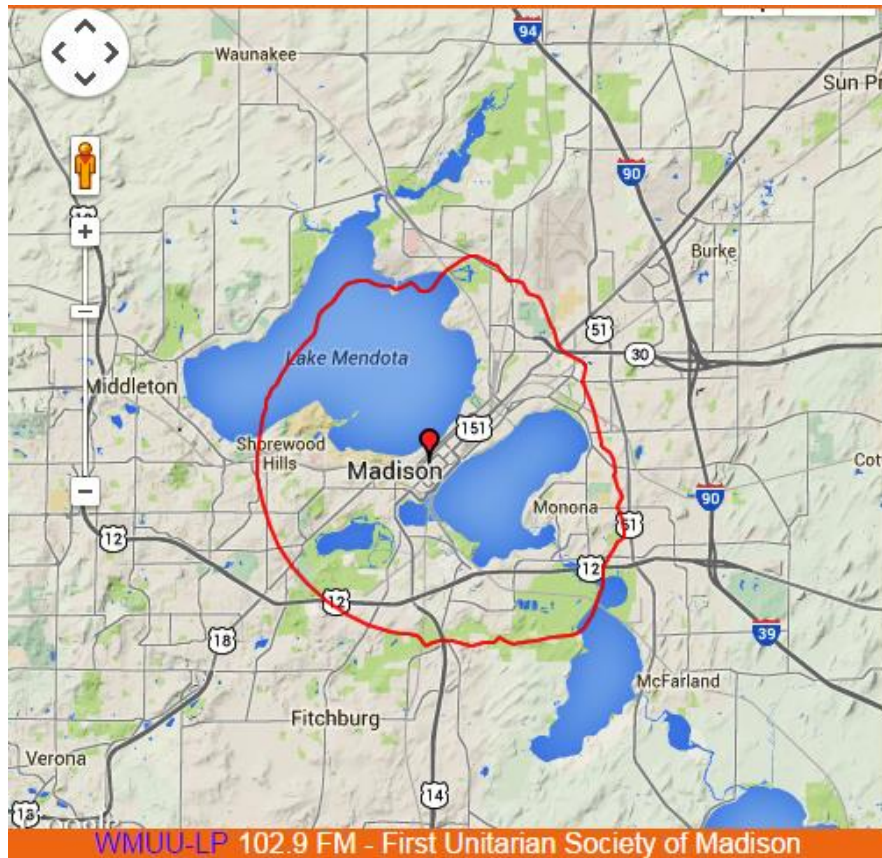
How to Listen

Like all low-powered radio stations in the U.S, WMUU broadcasts at a maximum of 100 watts, which means our broadcast range is about three and a half to five miles depending on terrain and elevation. Since our transmitter is near the top of State Street, listeners in the downtown, near west, and near east side neighborhoods can tune in to 102.9 FM and expect a good signal. Listeners farther out will be able to pick up a signal as elevation and terrain allow. If you can't pick up the radio signal, you can listen to our radio stream on wmuuradio.org

Get Involved!

WMUU is a small operation, with one paid staff member and a few hard-working volunteers. Because we are mostly automated, we don't have opportunities for news hosts and DJs, but we are looking for people who can help with producing radio stories.

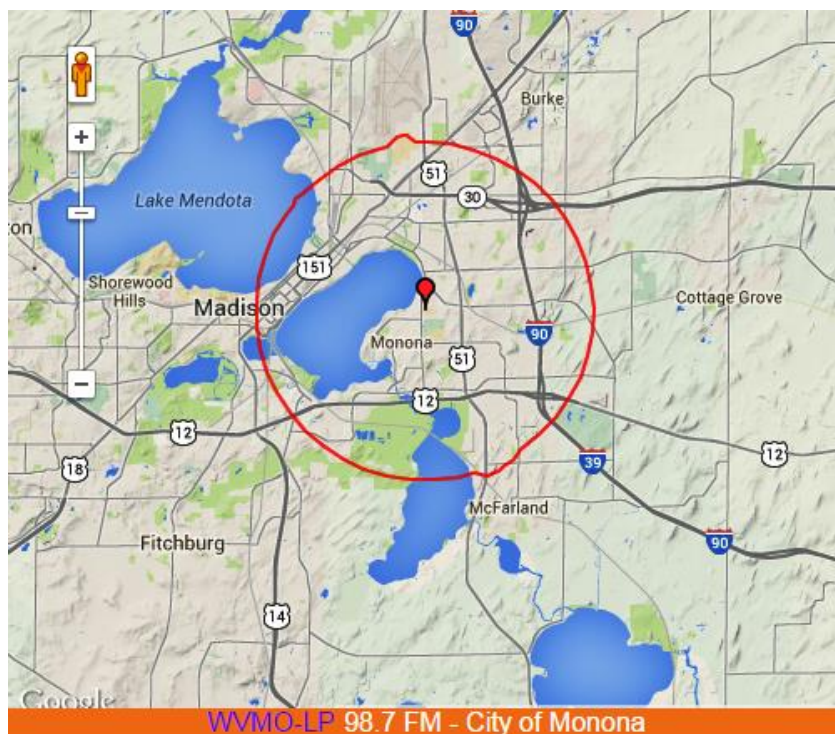
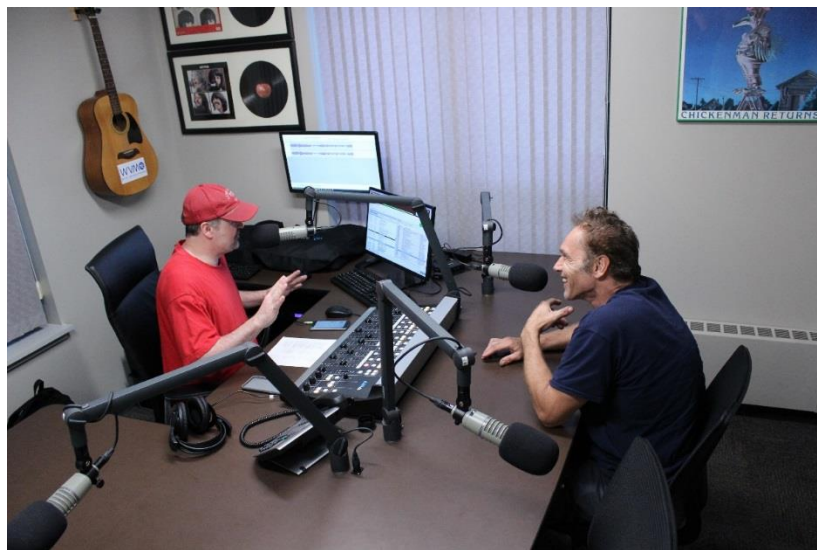
If you have an idea for a program or just want to try your hand at interviewing, contact Elizabeth at wmuuradio@gmail.com



WVMO 98.7

The Voice of Monona

The city of Monona's low-power radio station really is the voice of Monona. Programming is chock-full of local content from interviews of local residents, live remotes at the farmers market in Ahuska Park, Monona history and landmarks stories, to health and wellness tips from a brand new resident in Monona of just 3 months. With all the new technology being introduced each year, it's a wonder low-power radio is even available, let alone something that a small community embraces with open arms. The Monona public library, senior center and city administrator are all regulars to the WVMO studio. With just over 7,500 residents, Monona seems to be a great fit for a community driven radio platform. You can find out more about WVMO by going to wvmo.fm



WLSP 103.5

The Sun Community Radio

103.5 The Sun, Sun Prairie's Community Radio Station, is excited to announce the impending premiere of "Council Playback," a new program produced in partnership with the Sun Prairie City Council and Mayor Paul Esser.

The 30-minute "Council Playback," hosted by Dan Presser, will be designed as a review of the most recent Common Council and Committee of the Whole Meetings, and will focus on the most significant developments from those meetings. Each episode will feature Presser interviewing the mayor, a Council member, and potentially city staffers.

The premiere episode of "Council Playback" will feature a conversation with Mayor Esser. The show will air on 103.5 The Sun on Sundays at 5 PM beginning January 22, Mondays at 11:30 AM beginning January 23, and will also be available for on-demand listening at sunprairiemediacenter.com or the 103.5 The Sun app.

"I am excited for this new program," said Sun Prairie Media Center director Jeff Robbins. "While obviously we will continue our regular unfiltered coverage of city meetings and we continue to encourage residents to watch or attend full meetings, we know that that isn't always possible."

"Council Playback will provide residents an easily digestible and easily understandable summary of what is happening in City Hall. That encourages an informed citizenry, and that's good for everybody in Sun Prairie and that's a large reason why the Media Center exists."

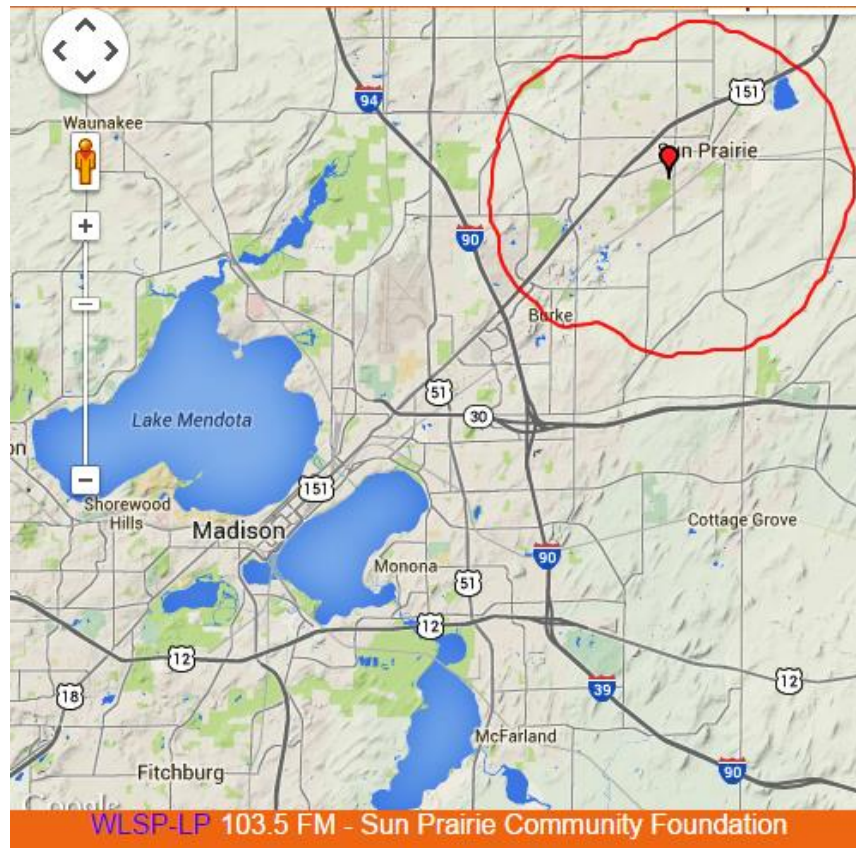
Every two weeks, Dan Presser, a Sun Prairie resident, current executive producer/owner at Tweedee Productions and a former producer, reporter, and anchor at WKOW-TV, will interview one guest. Dan's guests will include the mayor and city council members, each hopefully to appear on an equal basis. City staffers may be added as additional guests as agenda items/developments warrant.

Robbins wishes to thank Presser, Mayor Esser, and the city council for their agreement to participate in the program.

"The Mayor and alders are extremely busy people," said Robbins. "We are so appreciative of their support of this program and for their time. I know they feel, as does Dan, myself, and the rest of the staff at the Sun Prairie Media Center, that this program has the potential to be a huge benefit to Sun Prairie residents."

Currently the Sun Prairie Media Center covers Council, Committee of the Whole, Personnel, Public Works, Plan Commission, and Finance Committee meetings live on KSUN, channel 983, and streaming online at sunprairiemediacenter.com. These meetings are typically simulcast on 103.5 The Sun Community Radio. Video of the meetings is available to view on demand at sunprairiemediacenter.com.





Newsletter Contributors

- Richard Jones Jr, WWMV
- Robert Park, WIDE
- Elizabeth Delaquess, WMUU
- Will Nimmow, WVMO
- Jeff Robbins, WLSP

- Newsletter coordination and layout by Elizabeth Delaquess

Where to Hear All Stations

Outdoor Distant Reception Reports
<p>On Nov. 4, 2016 all 4 of the 5 community LPFM radio stations then on the air could be heard on a car radio at the following locations:</p> <ol style="list-style-type: none">1. Speedway Station, 4902 Verona Rd, Madison2. Water tower and reservoir tank parking lot, 2829 Prairie Rd, Madison <p>It was a foggy morning with temperature of about 45 degrees. Reception was checked on the radio in a 2008 Prius. Both spots are open locations on high ground. The distance to the farthest station heard, the one in Sun Prairie, was 15.4 miles from location 1. and 16.9 miles from location 2. In location 2. moving the car a few feet in the lot made the difference as to whether WMUU-LP and WLSP-LP could be heard or not.</p>
<p>On Jan. 14, 2017 all 5 of the community LPFM radio stations could be heard on a car radio at the same 2 locations:</p> <ol style="list-style-type: none">1. Speedway Station, 4902 Verona Rd, Madison2. Water tower and reservoir tank parking lot, 2829 Prairie Rd, Madison <p>It was an overcast morning with a temperature of about 17 degrees. Reception was again checked on the radio in a 2008 Prius.</p>
<p>On Jan. 26, 2017 all 5 of the community LPFM radio stations could be heard on the same 2008 Prius car radio at 4 additional locations:</p> <ol style="list-style-type: none">3. Marshall Park, 2101 Allen Blvd., on the western shore of Lake Mendota.4. Picnic Point parking lot, 2002 University Bay Dr.5. Observatory Drive Overlook, 1401 Observatory Dr.6. Owen Parkway scenic overlook in Hoyt Park (parking lot overlooking Hilldale). <p>It was an overcast afternoon with a temperature of 34 degrees.</p>

Contact Us!

<http://lpfm.madisonwi.us/>

